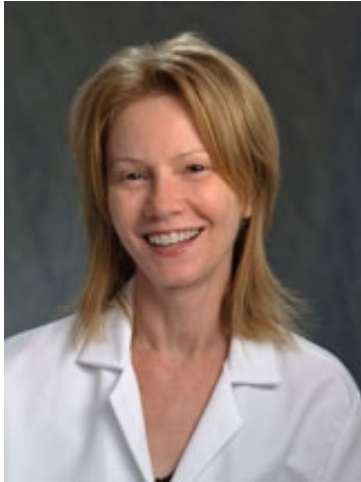




Kathleen Eme, CRNP *Nurse Practitioner*

**Titles**

Nurse Practitioner

Specialty

Internal Medicine

Board Certifications

Acute Care Nurse Practitioner (Adult - Gerontology)

Adult Nurse Practitioner, 2003

Educational Background

Nursing School: LaSalle University School of Nursing

Practice Locations

Penn Hospital Medicine

Pennsylvania Hospital

1 Pine West

800 Spruce Street

Philadelphia, PA 19107

800-789-7366 (PENN)

A facility of Pennsylvania
Hospital

Ms. Eme is a Penn Medicine employed provider.