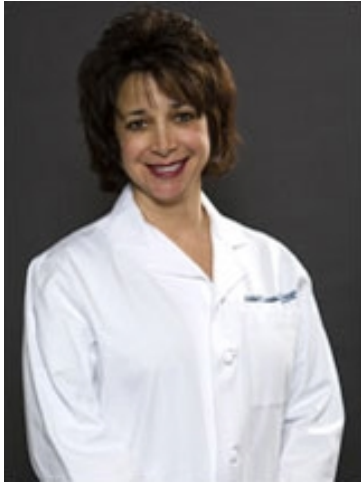


# Adele Caruso, MSN, CRNP

## *Nurse Practitioner*

**Titles**

Nurse Practitioner

**Specialty**

Urology and Urologic Surgery

**Board Certifications**

Adult Nurse Practitioner, 2006

### *Areas of Interest*

- ▶ Blood in Urine (Hematuria)
- ▶ Elevated PSA (Prostate-Specific Antigen) Level
- ▶ Enlarged Prostate BPH (Benign Prostatic Hyperplasia)
- ▶ Kidney Cyst (Renal Cyst)
- ▶ Overactive Bladder
- ▶ Pelvic Pain in Men
- ▶ Prostatitis
- ▶ Recurrent Urinary Tract Infection (UTI)
- ▶ Urinary Incontinence

### *Educational Background*

*Nursing School: University of Pennsylvania School of Nursing*

### *Practice Locations*

**Penn Urology**

Perelman Center for Advanced Medicine  
West Pavilion, 3rd Floor  
3400 Civic Center Boulevard  
Philadelphia, PA 19104  
800-789-7366 (PENN)

A facility of the Hospital of the University of Pennsylvania

**Abramson Cancer Center**

Perelman Center for Advanced Medicine  
West Pavilion, 4th Floor  
3400 Civic Center Boulevard  
Philadelphia, PA 19104  
800-789-7366 (PENN)

A facility of the Hospital of the University of Pennsylvania

Ms. Caruso is employed by Penn Medicine.