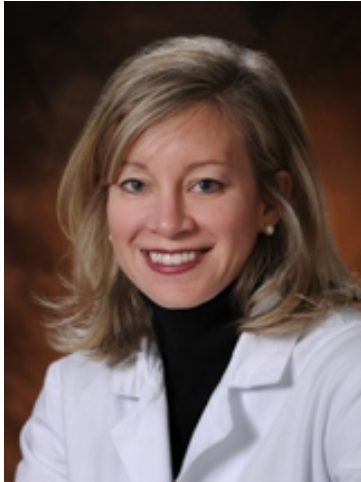


# Jennie Lattimer, CRNP

## *Nurse Practitioner*

**Titles**

Nurse Practitioner

**Specialty**

Medical Oncology

**Board Certifications**

Adult Nurse Practitioner, 2013

Oncology Certified Nurse, 2003

### *Areas of Interest*

► Breast Cancer

### *Educational Background*

*Nursing School: University of Pennsylvania School of Medicine*

### *Practice Locations*

**Rena Rowan Breast Center**

Abramson Cancer Center  
Perelman Center for Advanced  
Medicine, West Pavilion, 3rd  
Floor

3400 Civic Center Boulevard  
Philadelphia, PA 19104  
800-789-7366 (PENN)

A facility of the Hospital of  
the University of Pennsylvania

Ms. Lattimer is a Penn Medicine employed provider.