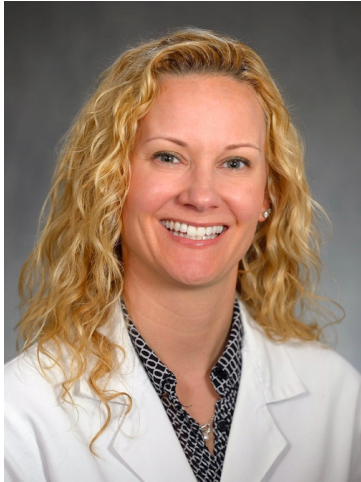


Victoria Sherry, CRNP

Nurse Practitioner

**Titles**

Nurse Practitioner

Specialty

Medical Oncology

Board Certifications

Oncology Certified Nurse, 2008

Adult Nurse Practitioner, 2002

Areas of Interest

► Lung Cancer

Educational Background

Graduate School: Duke University

Nursing School: University of Pennsylvania School of Nursing

Practice Locations

Abramson Cancer Center

Perelman Center for Advanced
Medicine

West Pavilion, 2nd Floor
3400 Civic Center Boulevard
Philadelphia, PA 19104
800-789-7366 (PENN)

A facility of the Hospital of
the University of Pennsylvania

Ms. Sherry is a Penn Medicine employed provider.