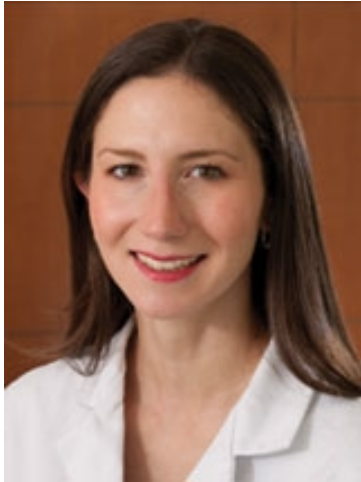


Christina M. Mitchell, MD

Physician



Titles

Assistant Professor of Clinical Medicine

Personal Statement

Recognized by Main Line Today's Top Doctor's 2016 issue

Specialty

Diabetes, Endocrinology and Metabolism

Board Certifications

Endocrinology, Diabetes, & Metabolism, 2010
Internal Medicine, 2008

Areas of Interest

- ▶ Bone Density
- ▶ Calcium and Bone Disorders
- ▶ Diabetes
- ▶ Gestational Diabetes
- ▶ Hyperparathyroidism
- ▶ Hyperthyroidism (Overactive Thyroid)
- ▶ Hypothyroidism (Underactive Thyroid)
- ▶ Metabolic Bone Disease
- ▶ Obesity
- ▶ Osteoporosis
- ▶ Thyroid Cancer
- ▶ Thyroid Disease and Pregnancy

Educational Background

Medical School: Jefferson Medical College

Residency: Thomas Jefferson University Hospital

Fellowship: Thomas Jefferson University Hospital

Memberships

American Association of Clinical Endocrinologists ,
National
Philadelphia Endocrine Society, Local
The Endocrine Society , National

Practice Locations

Penn Rodebaugh Diabetes Center

Perelman Center for Advanced
Medicine
West Pavilion, 4th Floor
3400 Civic Center Boulevard
Philadelphia, PA 19104
800-789-7366 (PENN)

A facility of the Hospital of
the University of Pennsylvania

Penn Endocrinology

Perelman Center for Advanced
Medicine
West Pavilion, 4th Floor
3400 Civic Center Boulevard
Philadelphia, PA 19104
800-789-7366 (PENN)

A facility of the Hospital of
the University of Pennsylvania

Penn Endocrinology, Diabetes and Metabolism

Penn Medicine Valley Forge
1001 Chesterbrook Boulevard
Berwyn, PA 19312
800-789-7366 (PENN)

Dr. Mitchell is a Penn Medicine employed physician.