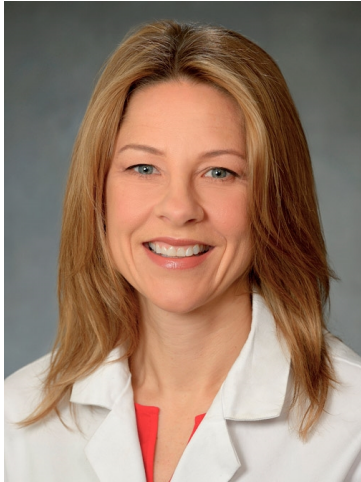


Eleanor Bevan, PA-C

Physician Assistant

**Titles**

Physician Assistant

Specialty

Urology and Urologic Surgery

Board Certifications

Physician Assistant, 2002

Areas of Interest

- ▶ Blood in Urine (Hematuria)
- ▶ Enlarged Prostate BPH (Benign Prostatic Hyperplasia)
- ▶ Kidney Stones
- ▶ Male Genital Disorders
- ▶ Overactive Bladder
- ▶ Pelvic Pain in Men
- ▶ Prostatitis
- ▶ Urinary Tract Infection (UTI)

Educational Background

Graduate School: Weill Medical College of Cornell University

Practice Locations

Penn Urology

Penn Medicine University City
4th Floor
3737 Market Street
Philadelphia, PA 19104
800-789-7366 (PENN)

A facility of Penn
Presbyterian Medical Center

Penn Urology

Penn Medicine Radnor
250 King of Prussia Road
Radnor, PA 19087
800-789-7366 (PENN)

A facility of the Hospital of
the University of Pennsylvania

Ms. Bevan is a Penn Medicine employed provider.