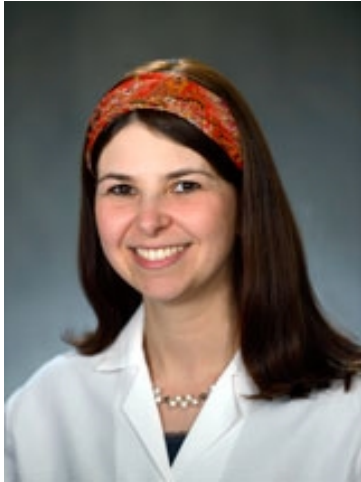


Tamara Danilewitz, MD

Physician



Titles
Physician

Specialty
Internal Medicine

Board Certifications
Internal Medicine, 2011

Educational Background

Medical School: Drexel University Center City Hahnemann Campus

Residency: University of Rochester Medical Center

Residency: Thomas Jefferson University Hospital

Practice Locations

Penn Spruce Internal Medicine

Penn Medicine Washington
Square
16th Floor
800 Walnut Street
Philadelphia, PA 19107
800-789-7366 (PENN)

Dr. Danilewitz is a Penn Medicine employed physician.